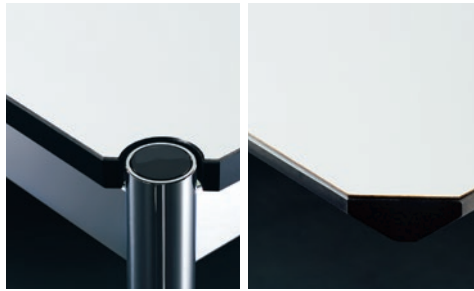




Table Surfaces

USM Haller / USM Kitos

Table Surfaces
USM Haller / USM Kitos



Laminate

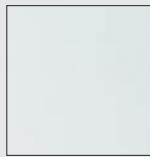
Laminate surfaces are composed of a synthetic resin and are highly durable, as they are extremely resistant to wear, denting and scratching. A thin, black resin strip borders the table.



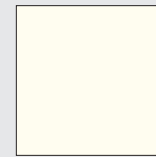
Powder-coated MDF

Composed of natural wood materials, the medium-density fiberboard (MDF) is finished with a thin powder coating for an overall protective seal. The result is a durable, scratch and impact resistant tabletop.

Lead time 10 – 12 weeks

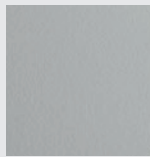


Pearl gray laminate

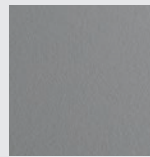


Pure white RAL 9010

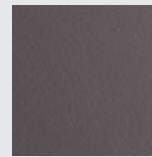
Lead time 12 – 14 weeks



Pastel gray laminate



Light mid-gray laminate



Dark warm gray laminate



Light gray RAL 7035



USM matte silver



Mid-gray RAL 7005



Anthracite RAL 7016



Graphite black RAL 9011



Steel blue RAL 5011



Gentian blue RAL 5010



USM green



Golden yellow RAL 1004



Pure orange RAL 2004



USM ruby red



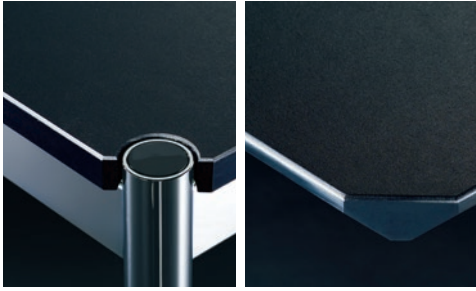
USM brown



USM beige

USM Modular Furniture
28–30 Greene Street
New York, NY 10013
Phone 212-371-1230

www.usm.com



Linoleum

Linoleum has a leather-like quality created from an inlay of natural components and sustainable materials, including linseed oil and wood. It is also slightly elastic and has antistatic properties that help keep dust from settling on its surface.



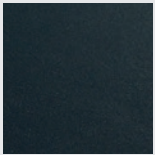
Oiled wood veneer

The lacquered tabletops are treated with a water-based solvent creating a slightly glossy sheen, making the wood more resistant to scratches.

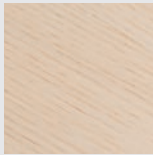


Lacquered wood veneer

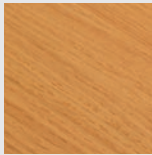
The natural oiled tabletops are finished with a high-quality matte surface, which brings out the grain structure of the wood.



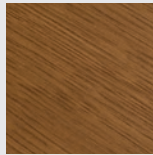
Black linoleum



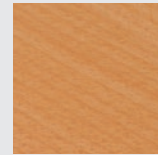
White oiled oak veneer



Natural oiled oak veneer



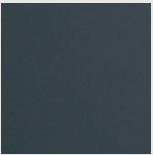
Brown oiled oak veneer



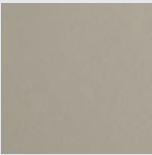
Natural lacquered beech veneer



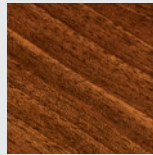
Ash linoleum



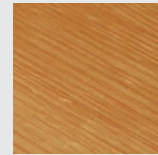
Charcoal linoleum



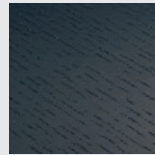
Pebble linoleum



Natural oiled walnut veneer



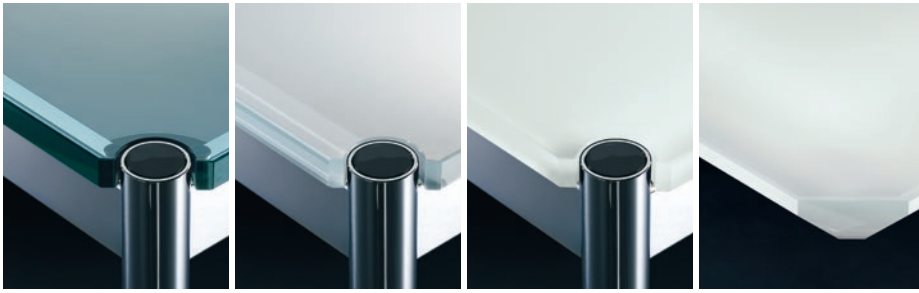
Natural lacquered oak veneer



Black lacquered oak veneer



Mauve linoleum



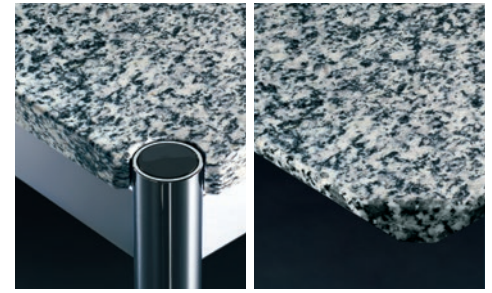
Glass

Transparent glass: The 3/4" clear, float glass is finished with a polished surface.

Back painted clear glass: The 3/4" low iron, back painted glass is finished with a polished surface.

Back painted etched glass (Acilux): The 3/4" low iron, back painted glass is finished with a matte surface.

A 1/16" bevelled edge borders all tables.

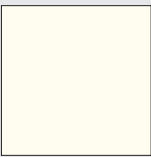


Granite

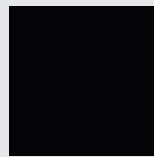
The 3/4" medium- to fine-grain Italian granite is finished with a polished or sanded surface. A 1/16" bevelled edge borders the table.



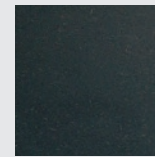
Transparent glass



Pure white
RAL 9010



Graphite black
RAL 9011



Assoluto matte
black granite



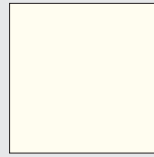
Light gray
RAL 7035



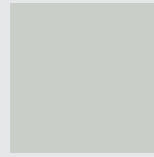
USM matte silver



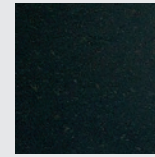
Mid-gray
RAL 7005



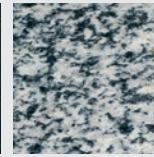
Pure white
RAL 9010



Light gray
RAL 7035



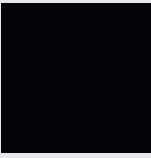
Assoluto polished
black granite



Serizzo polished
grey granite



Anthracite
RAL 7016



Graphite black
RAL 9011



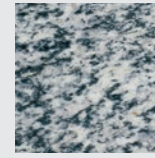
Steel blue
RAL 5011



Steel blue
RAL 5011



Mid-gray
RAL 7005



Serizzo matte
grey granite



Gentian blue
RAL 5010



USM green



Golden yellow
RAL 1004



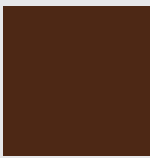
Anthracite
RAL 7016



Pure orange
RAL 2004



USM ruby red



USM brown



USM beige

USM
Modular Furniture



Table Surfaces

USM Haller/USM Kitos