

USM Haller Tables

The USM Haller and USM Haller Plus tables can be equipped with an optional cable basket underneath the tabletop, while the USM Haller Advanced features integrated smart solutions for electrification. All tables can be equipped with grommet hatches for network access.

Basic table

Optional cable basket underneath the tabletop



USM Haller

H: 740
L: 3000 / D: 1000
L: 3000 / D: 750
L: 2500 / D: 1000
L: 2500 / D: 750
L: 2250 / D: 1000
L: 2250 / D: 750
L: 2000 / D: 1000
L: 2000 / D: 750
L: 1750 / D: 1000
L: 1750 / D: 750
L: 1500 / D: 1000
L: 1500 / D: 750
L: 1250 / D: 1000
L: 1250 / D: 500*

Sliding tabletop + adaptation points

Integrated cable tray accessible from above by sliding back the tabletop
Adaptation points for accessories



USM Haller Advanced

H: 740
L: 2000 / D: 1000
L: 2000 / D: 750
L: 1750 / D: 1000
L: 1750 / D: 750
L: 1500 / D: 1000
L: 1500 / D: 750
L: 1250 / D: 750

Working table

Optional cable basket underneath the tabletop
Removable adaptation points for accessories



USM Haller Plus

H: 740
L: 3000 / D: 1000
L: 3000 / D: 750
L: 2000 / D: 1000
L: 2000 / D: 750
L: 1750 / D: 1000
L: 1750 / D: 750
L: 1500 / D: 1000
L: 1500 / D: 750
L: 1250 / D: 750

Side table



USM Haller Side table

H: 370
L: 2500 / D: 1000
L: 2500 / D: 750
L: 2250 / D: 1000
L: 2250 / D: 750
L: 2000 / D: 1000
L: 2000 / D: 750
L: 1750 / D: 1000
L: 1750 / D: 750
L: 1500 / D: 1000
L: 1500 / D: 750
L: 1250 / D: 750
L: 1000 / D: 1000
L: 750 / D: 750

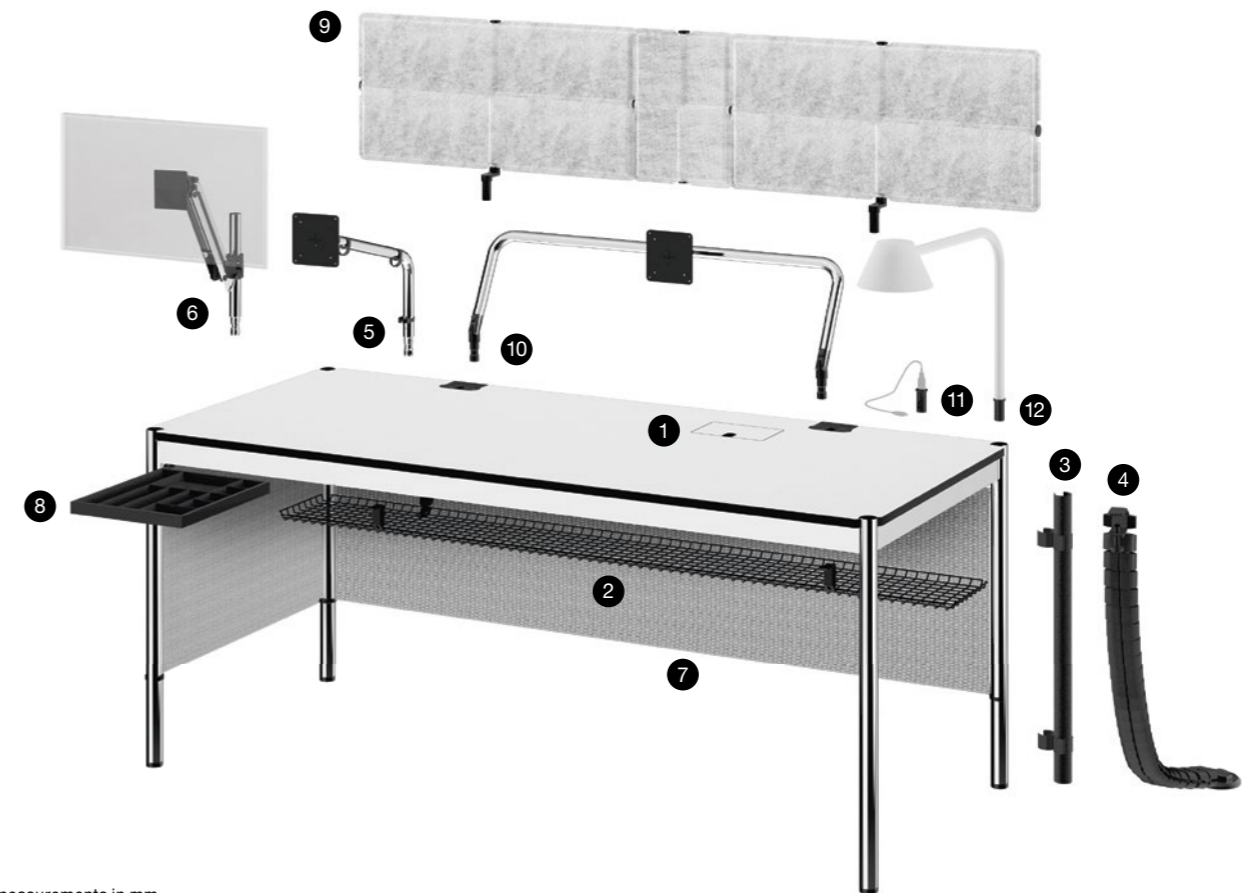
* Only available in the surfaces pearl grey laminate, black linoleum and Fenix, Grigio Londra
All measurements in mm.

Accessories for all USM Haller Tables

- 1 **Grommet hatch for network access**
Hatch for a single power outlet, flush-mounted in the tabletop. This unit can be mounted in two different positions on the tabletop.
- 2 **Cable management**
For the USM Haller Advanced table, a cable tray integrated under the tabletop offers storage room and attachment options for all cables and technical components. For the USM Haller and USM Haller Plus table, a cable wire basket can be attached.
- 3 **Cable guide**
Is clamped to the table legs and guides cables to their outlets.
- 4 **Link chain**
Holds and directs cables to the power source. Flexible and adjustable to different lengths.
- 5 **Flat screen support arm**
Screens are mounted onto the support arm (VESA standard). Swivel-type with a spherical joint for the screen. Mounting at different heights is possible for screens weighing up to 12 kg.
- 6 **Flat screen pivot arm**
Screens are screwed to the height adjustable pivot arm using a mounting plate (VESA standard). Continuous height adjustment for screens weighing up to 12 kg.
- 7 **Front and side panel**
Can be attached under the table to the long side or laterally for modesty. For tables with lengths: 2000, 1750, 1500, 1250 and depths: 1000, 750.
- 8 **Pivoting pen holder**
Provides room for writing instruments and can be discreetly stowed under the tabletop.
- 9 **USM Privacy Panels**
Fitted on the long side of the table to provide individualisation and privacy. H: 350 or H: 700. For tables with lengths: 3000, 2000, 1750, 1500.
- 10 **Flat screen support bar**
The support bar is inserted into the adaptation points. Up to two screens (max. 2 x 12 kg) can be attached using a mounting plate (VESA standard). Screens can be mounted at different heights; screens can be adjusted with ball joints. Continuously height-adjustable for screens weighing up to 12 kg.
- 11 **USB adapter**
The adapter can be used for USB A 3.0 and C connections. It can easily be inserted into the adaptation point. Usable as power supply or for data transfer.
- 12 **Lamp peg**
An optional lamp peg for easy attachment of selected table lamps. Electrification is possible through the adaptation point.

Accessories for USM Haller Plus / Advanced Table

- Options
- 10a **Flat screen support bar fix**
 - 10b **Flat screen support bar adjustable**
Move forwards or backwards two notches at a time to adjust the viewing distance.



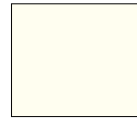
All measurements in mm.

Colours & surfaces

USM Haller



Metal



Pure white
RAL 9010



Light grey
RAL 7035



USM mid-grey



Anthracite
RAL 7016



Graphite black
RAL 9011



Golden yellow
RAL 1004



Pure orange
RAL 2004



USM ruby red



Gentian blue
RAL 5010



Steel blue
RAL 5011



USM green



Olive green
RAL 6003



USM beige



USM brown

USM Haller and USM Kitos tables



Laminate



Pearl grey
laminate



Pastel grey
laminate

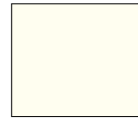


Light mid-grey
laminate



Dark warm grey
laminate

Powder-coated MDF



Pure white
RAL 9010

Linoleum



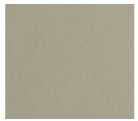
Ash linoleum



Charcoal
linoleum



Black linoleum



Pebble linoleum



Mauve linoleum

Fenix



Fenix,
Bianco Kos



Fenix,
Grigio Londra

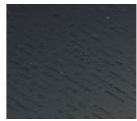


Fenix,
Nero Ingo

Lacquered veneer



Natural lacquered
oak veneer



Black lacquered
oak veneer

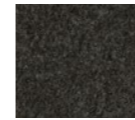
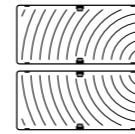
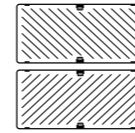
Other colours and surfaces available upon request.
Prices and delivery times of table surfaces upon request.

USM Haller Soft Panel

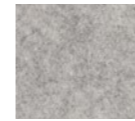


Fabric panel

Mono Panel



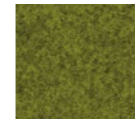
Dark grey



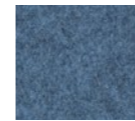
Grey



Taupe



Green

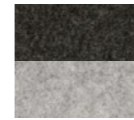
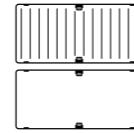


Blue

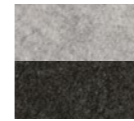


Red

Duo Panel



Dark grey
Grey



Grey
Dark grey



Taupe
Dark blue



Green
Light green



Blue
Light blue



Red
Orange

Mono Panels are designed with the same pattern on both sides (either diagonal or curved grooves) and in a single colour.

Duo Panels have vertical grooves on one side, are plain on the back and available in various colour combinations.

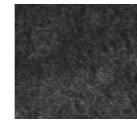
USM Privacy Panels



Fabric panel



Light grey



Anthracite

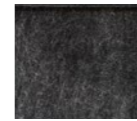
USM Inos box



Fabric panel



Light grey

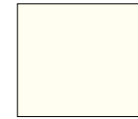


Anthracite

USM Inos drawer set



Metal



Pure white
RAL 9010



USM mid-grey



Graphite black
RAL 9011



Pure orange
RAL 2004



Gentian blue
RAL 5010



USM green



USM beige



Light grey
RAL 7035



Anthracite
RAL 7016



Golden yellow
RAL 1004



USM ruby red



Steel blue
RAL 5011



Olive green
RAL 6003



USM brown

The following options are available in graphite black and pure white only:
USM Inos drawer set, 5 drawers, open
USM Inos drawer set, 10 drawers, closed
USM Inos drawer set, 10 drawers, open

Pots



Clay



Terracotta



Basalt