



ton.eu





Ton

Upholstery materials are divided into price categories. Fabrics and artificial leathers fall under categories A to D and natural leather falls under categories 1 and 2. All upholstery materials, especially those with high wear resistance, are suitable for use in public areas. Many of them also fulfil the safety requirements for flame retardancy.


In compliance with environmental protection, the materials fulfil the requirements of EU regulations or other internationally recognised organisations.

CATEGORY A

● **CURA**

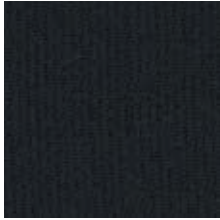
Composition	Width	Abrasion resistance	Pilling	Flame retardancy	Ecology	Cleaning
98% recycled polyester, 2% polyester	140 cm	100 000 MD	4-5	EN 1021 Class 1 & 2 CAL TB 117 - 2013	OEKO-TEX® EU Ecolabel	98% RECYCLED
						
60019	60112	62125	68182			

● **GRAIN**

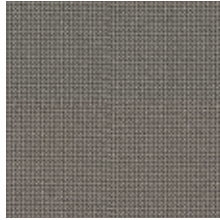
Composition	Width	Abrasion resistance	Pilling	Flame retardancy	Ecology	Cleaning
surface: 94% polyurethane, 6% silicone underlay: 100% polyester	140 cm	200 000 MD		BS 5852 Part 1 CAL TB 117 - 2013 EN 1021 Class 1 & 2	REACH	ANTIMICROBIAL RESISTANCE TO STAINS
						
ARCILLA	BLANCO	CANELA	CENIZA			
						
COGNAC	MARRON	NEGRO				

● RENEWED LOOP

Composition	Width	Abrasion resistance	Pilling	Flame retardancy	Ecology	Cleaning
100% recycled polyester, contains 3-10% textile residues	140 cm	100 000 MD	4-5	EN 1021 Class 1 & 2 CAL TB 117 - 2013 BS 5852 Part 1	OEKO-TEX® EU Ecolabel	 100% RECYCLED



60999



61280

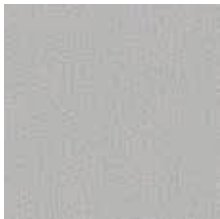


66257

CATEGORY B

● LOWLANDS

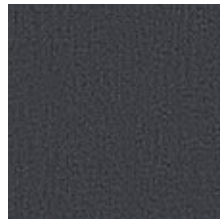
Composition	Width	Abrasion resistance	Pilling	Flame retardancy	Ecology	Cleaning
70% recycled wool, 30% polyamide	140 cm	190 000 MD	3	BS 5852 Crib 5 EN 1021 Class 1 & 2 CAL TB 117 - 2013	OEKO-TEX® REACH	 70% RECYCLED



511



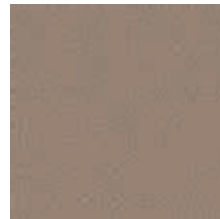
513



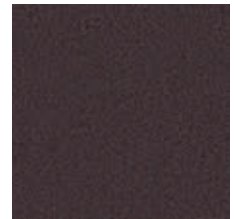
516



521



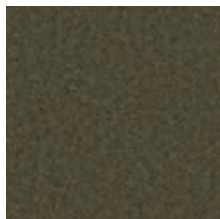
526



529



550

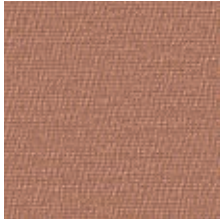


575

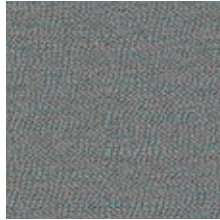
CATEGORY C

● ARCO

Composition	Width	Abrasion resistance	Pilling	Flame retardancy	Ecology	Cleaning
95% virgin wool 5% polyamide	140 cm	70 000 MD	4-5	BS 5852 Part 1, CAL TB 117 - 2013, DIN EN 1021-1/-2 UNI 9175 1 IM	REACH AB 2998	☒ ☒ ☒ ☒ (P) ☒ MARITIME SECTOR



BLOSSOM



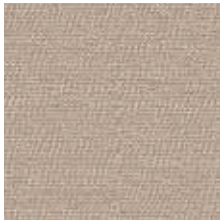
COAST



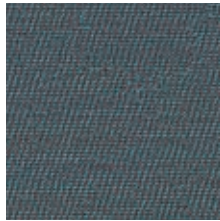
EBONY



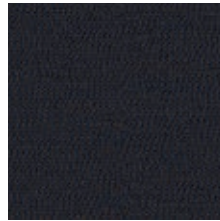
ICE



JASMIN



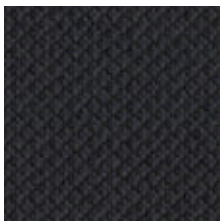
POND



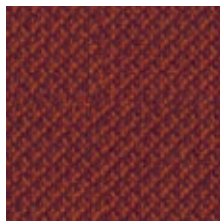
SECRET

● CLEO

Composition	Width	Abrasion resistance	Pilling	Flame retardancy	Ecology	Cleaning
95% virgin wool, 5% polyamide	140 cm	70 000 MD	4-5	BS 5852 Part 1 CAL TB 117 - 2013 DIN EN 1021-1/-2 ÖNORM B1/Q1 UNI 9175 1 IM	REACH AB 2998	☒ ☒ ☒ ☒ (P) ☒ MARITIME SECTOR



COAL



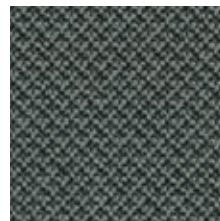
LAMPION



MAGMA



PEARL



SALBEI



WALNUT

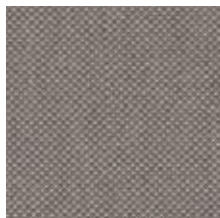
CATEGORY D

● FIORD 2

Composition	Width	Abrasion resistance	Pilling	Flame retardancy	Ecology	Cleaning
92% virgin wool, 8% nylon	140 cm	60 000 MD	4-5	BS 5852 Part 1 EN 1021 Class 1 & 2 CAL TB 117 - 2013 ÖNORM B1/Q1 UNI 9175 1 IM	EU Ecolabel	☒ ☒ ☒ ☒ ☒ ☒ MARITIME SECTOR



0201



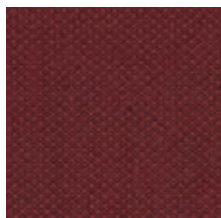
0262



0422



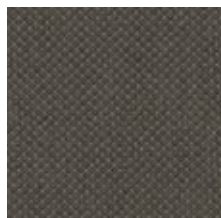
0571



0581



0751



0961

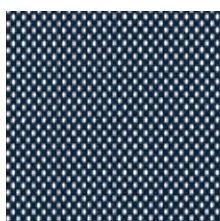
MESHES

● POLO

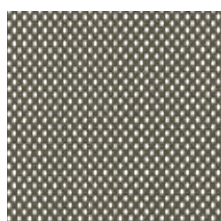
Composition	Width	Abrasion resistance	Pilling	Flame retardancy	Ecology	Cleaning
100% polyester	150 cm	100 000 MD	5		OEKO-TEX®	☒ ☒ ☒ ☒ ☒



BEIGE



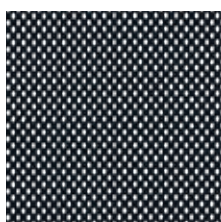
BLEU



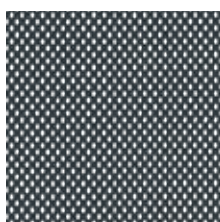
CASTORO



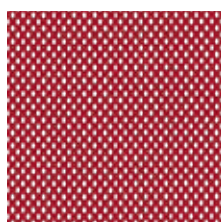
GRIGIO



NERO



PIOMBO




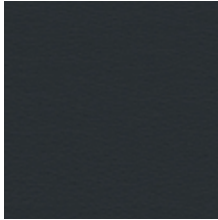

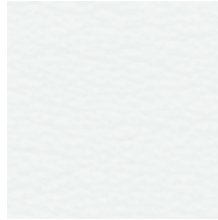


ROSSO

Polo is an airy textile mesh which is used for back part of Chips lounge chair. It can also be used to upholster the backs and seats of, for example, a classic range of bentwood furniture.

If used on a seat the Polo mesh is always combined with special underlay material for increased durability.



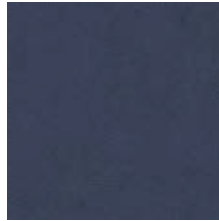


CATEGORY 1

● PRESCOTT

Composition	Width	Leather thickness	Flame retardancy	Ecology	Cleaning
semi-aniline leather	4.8-5.0 m ²	1.2-1.4 mm	CAL TB 117 - 2013 BS 5852:1979 BS EN 1021-1-2:2006	REACH	☒ ☒ ☒ ☒ ☒ MARITIME SECTOR
					
ANTILOP	BLACK INK	CLAY	DASH	ROOT	SWAMP

CATEGORY 2

● ELMOTIQUE

Composition	Width	Leather thickness	Flame retardancy	Ecology	Cleaning
aniline leather	±4.8 m ²	1.00-1.20 mm	CAL TB 117 - 2013 ISO 8191 Class 1 & 2 EN 1021 Class 1 & 2	REACH	☒ ☒ ☒ ☒ ☒
					
43024	43807	77875	93957	99001	