

WZORNIK TKANIN - FAMEG

Tkanina Gr. A



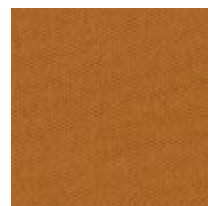
Etna 38



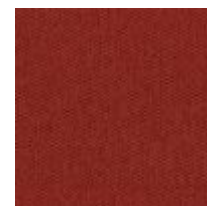
Etna 85



Etna 80



Etna 48



Etna 55



Etna 60



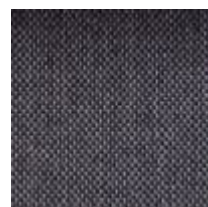
Inari 28



Inari 26



Inari 91



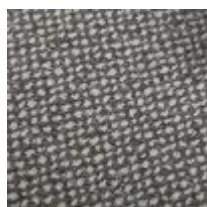
Inari 96



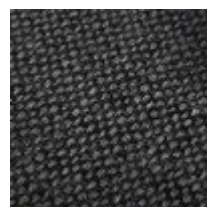
Inari 100



Monet 31



Monet 90



Monet 95



Monet 26

ETNA Dane techniczne: 100% PES Gramatura: 330 g/m² Martindale: 83 000 cycles

INARI Dane techniczne: 100% PP Gramatura: 260 g/m² Martindale: 49 000 cycles

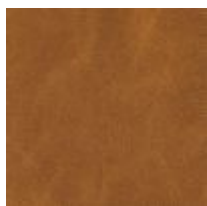
MONET Dane techniczne: 100% PES Gramatura: 500 g/m² Martindale: 100 000 cycles

WZORNIK TKANIN - FAMEG

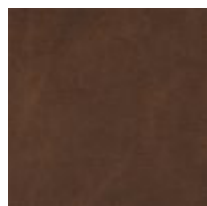
Tkanina Gr. A **EKOSKÓRA**



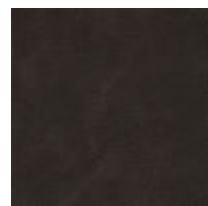
Vintage 200
Natural



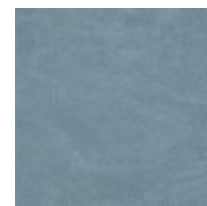
Vintage 215
Cognac



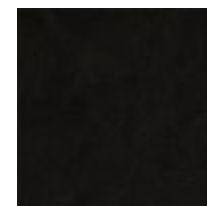
Vintage 805
Dark Brown



Vintage 812
Dark Chocolate



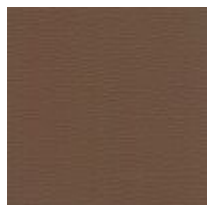
Vintage 505
Middle Blue



Vintage 100
Black



Dolaro 3



Dolaro 9



Dolaro 13



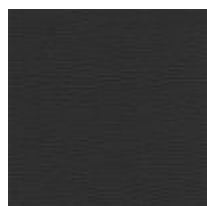
Dolaro 10



Dolaro 17



Dolaro 18



Dolaro 19



Dolaro 12



Dolaro 14

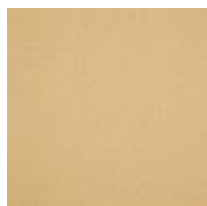


Dolaro 15

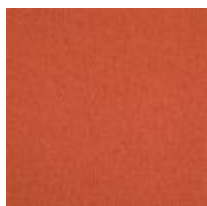
VINTAGE Dane techniczne: 65% PU, 25% PES, 10% CO Gramatura: 428 g/m² Martindale: 50 000 cycles
DOLARO Dane techniczne: 83% PVC, 15% PES, 2% PU Gramatura: 260 g/m² Martindale: 120 000 cycles

WZORNIK TKANIN - FAMEG

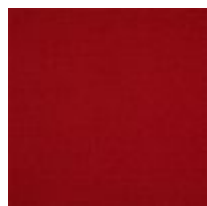
Tkanina Gr. B



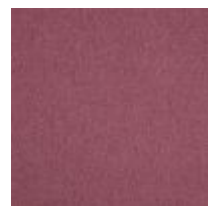
Braveheart 21
Gold



Braveheart 24
Sunset



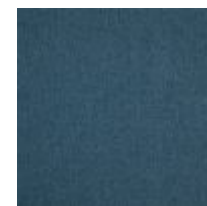
Braveheart 26
Cardinal



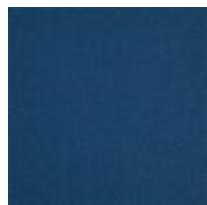
Braveheart 29
Damson



Braveheart 03
Teal



Braveheart 01
Spruce



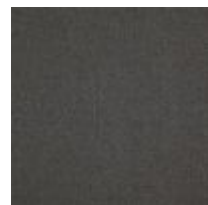
Braveheart 33
Navy



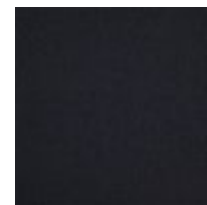
Braveheart 07
Limestone



Braveheart 10
Shadow



Braveheart 11
Charcoal



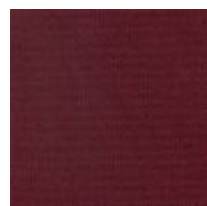
Braveheart 34
Onyx



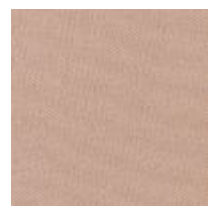
Chopper 503
Gold



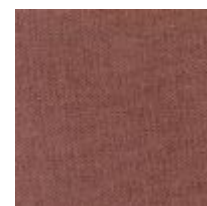
Chopper 315
Fire



Chopper 303
Magenta



Chopper 900
Rosewater



Chopper 905
Nostalgia



Chopper 002
Passion

BRAVEHEART Dane techniczne: 100% PES Gramatura: 397 g/m² Martindale: 100 000 cycles

CHOPPER Dane techniczne: 100% PES Gramatura: 375 g/m² Martindale: 60 000 cycles

WZORNIK TKANIN - FAMEG

Tkanina Gr. B



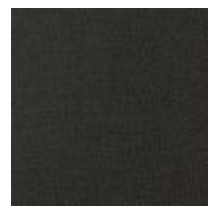
Chopper 001
Purple



Chopper 601
Chrome



Chopper 612
Chocolate



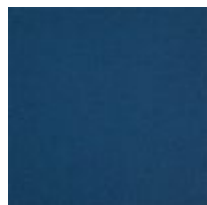
Chopper 200
Black



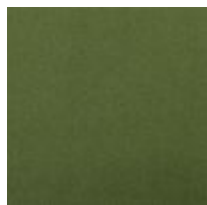
Chopper 805
Water



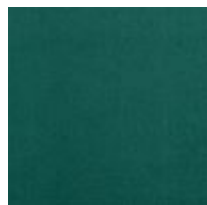
Chopper 702
Petrol



Chopper 714
Imperial



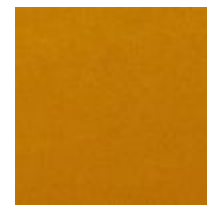
Crown Velvet
19 (welur)



Crown Velvet
21 (welur)



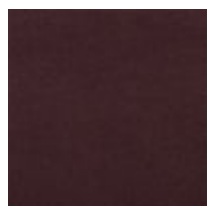
Crown Velvet
51 (welur)



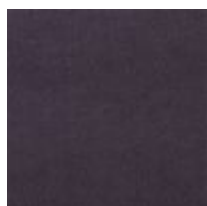
Crown Velvet
49 (welur)



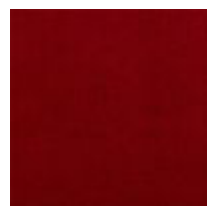
Crown Velvet
09 (welur)



Crown Velvet
42 (welur)



Crown Velvet
41 (welur)



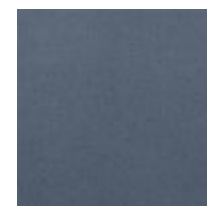
Crown Velvet
46 (welur)



Crown Velvet
05 (welur)



Crown Velvet
35 (welur)



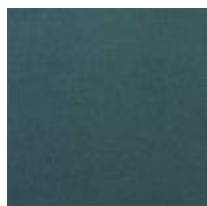
Crown Velvet
30 (welur)

CHOPPER Dane techniczne: 100% PES Gramatura: 375 g/m² Martindale: 60 000 cycles

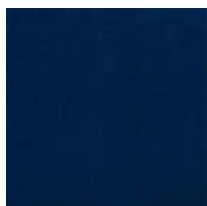
CROWN VELVET Dane techniczne: 100% PES Gramatura: 535 g/m² Martindale: 120 000 cycles

WZORNIK TKANIN - FAMEG

Tkanina Gr. B



Crown Velvet
31 (welur)



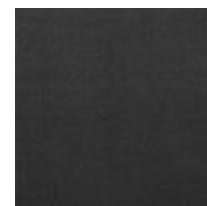
Crown Velvet
37 (welur)



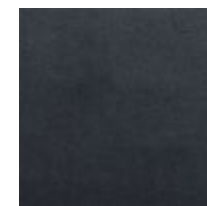
Crown Velvet
10 (welur)



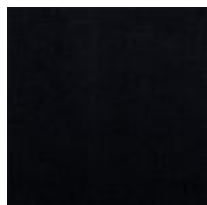
Crown Velvet
03 (welur)



Crown Velvet
01 (welur)



Crown Velvet
52 (welur)



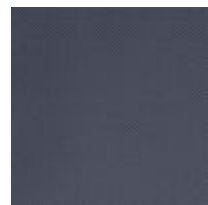
Crown Velvet
56 (welur)



Tokyo
T188 (welur)



Tokyo
T9 (welur)



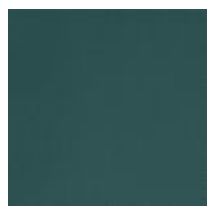
Tokyo
T3 (welur)



Tokyo
T160 (welur)



Tokyo
T119 (welur)



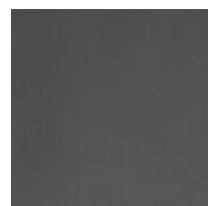
Tokyo
T4 (welur)



Tokyo
T207 (welur)



Tokyo
T120 (welur)



Tokyo
T118 (welur)



Tokyo
T101 (welur)



Tokyo
T115 (welur)

CROWN VELVET Dane techniczne: 100% PES Gramatura: 535 g/m² Martindale: 120 000 cycles

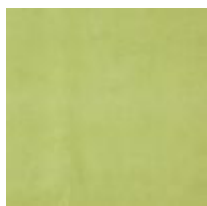
TOKYO Dane techniczne: 100% PES Gramatura: 480 g/m² Martindale: 100 000 cycles

WZORNIK TKANIN - FAMEG

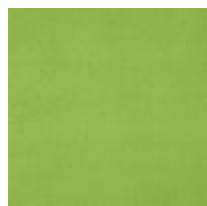
Tkanina Gr. B



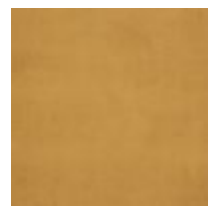
Tokyo
T2 (welur)



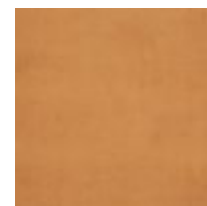
Twice 08 B
Pear



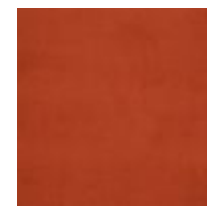
Twice 08 A
Apple



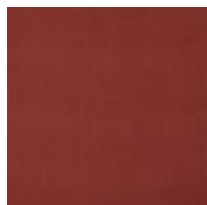
Twice 19 B
Gold



Twice 19 A
Mandarin



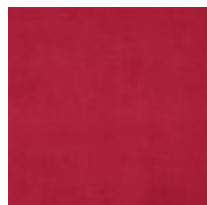
Twice 20 B
Canyon



Twice 20 A
Paprika



Twice 21 A
Chardonay



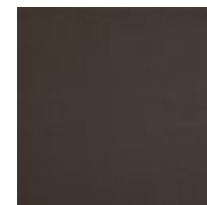
Twice 21 B
Cerise



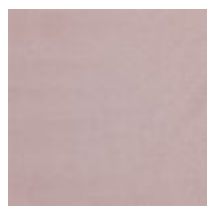
Twice 01 A
Griffin



Twice 14 B
Mushroom



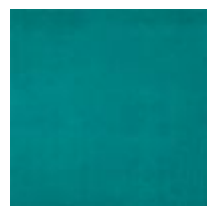
Twice 14 A
Walnut



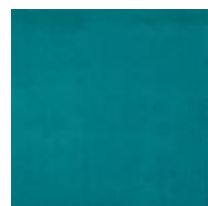
Twice 24 B
Parma



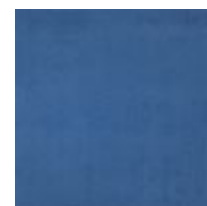
Twice 24 A
Aubergine



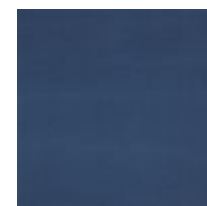
Twice 06 B
Teal



Twice 06 A
Beetle



Twice 05 B
Cobalt



Twice 05 A
Navy

TOKYO Dane techniczne: 100% PES Gramatura: 480 g/m² Martindale: 100 000 cycles

TWICE Dane techniczne: 100% PES Gramatura: 306 g/m² Martindale: 40 000 cycles

WZORNIK TKANIN - FAMEG

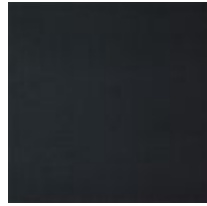
Tkanina Gr. B



Twice 01 B
Silver



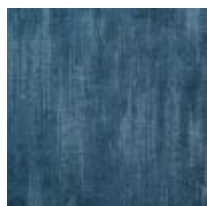
Twice 02 B
Pewter



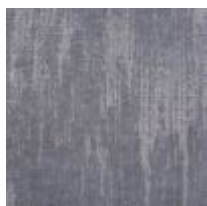
Twice 02 A
Onyx

WZORNIK TKANIN - FAMEG

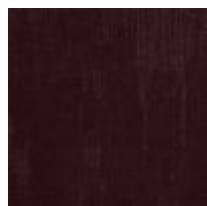
Tkanina Gr. C



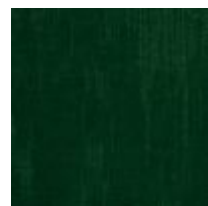
Diva 10
Navy Blue



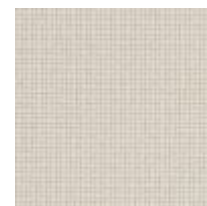
Diva 04
Grey



Diva 14
Violet



Diva 15
Dark Green



Go Uni
61138



Go Uni
61140



Go Check
61138



Go Check
60081



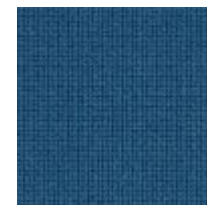
Go Couture
60081



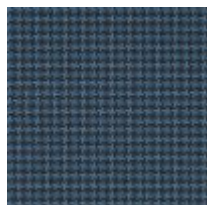
Go Uni
66136



Go Check
66136



Go Uni
66139



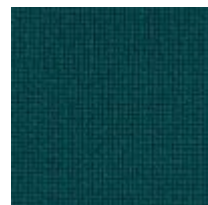
Go Couture
66139



Go Uni
67071



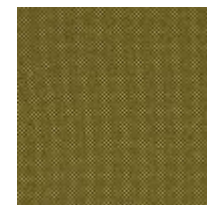
Go Check
67071



Go Uni
68152



Go Uni
62071



Go Check
62071

DIVA Dane techniczne: 53% PES, 40% AC, 7% VI Gramatura: 403 g/m² Martindale: 50 000 cycles

GO UNI Dane techniczne: 100% Trevira CS Gramatura: 311 g/m² Martindale: 100 000 cycles

GO CHECK/COUTURE Dane techniczne: 100% Trevira CS Gramatura: 311 g/m² Martindale: 80 000 cycles

WZORNIK TKANIN - FAMEG

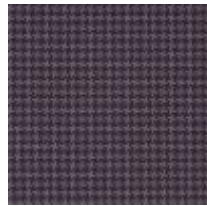
Tkanina Gr. C



Go Check
64183



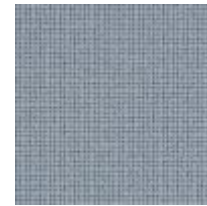
Go Uni
65086



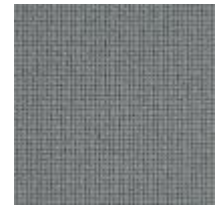
Go Couture
65086



Go Uni
64172



Go Uni
60080



Go Uni
60083



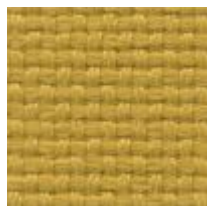
Go Uni
60999

GO UNI Dane techniczne: 100% Trevira CS Gramatura: 311 g/m² Martindale: 100 000 cycles

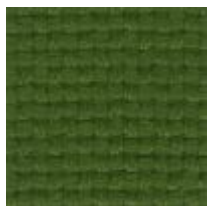
GO CHECK/COUTURE Dane techniczne: 100% Trevira CS Gramatura: 311 g/m² Martindale: 80 000 cycles

WZORNIK TKANIN - FAMEG

Tkanina Gr. C



Park 19



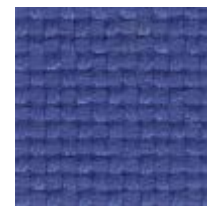
Park 21



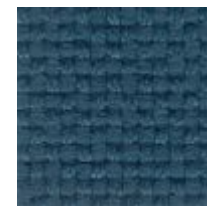
Park 25



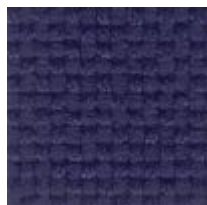
Park 28



Park 24



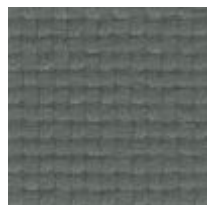
Park 22



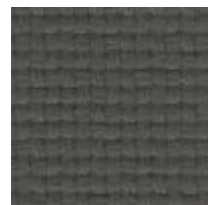
Park 23



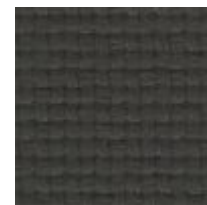
Park 3



Park 4



Park 10



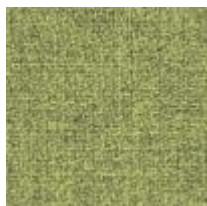
Park 12

WZORNIK TKANIN - FAMEG

Tkanina Gr. C



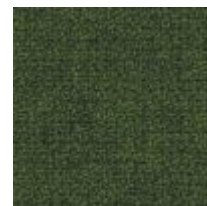
Step Melange
62057



Step Melange
68163



Step Melange
68159



Step Melange
68120



Step Melange
64181



Step Melange
65093



Step Melange
66152



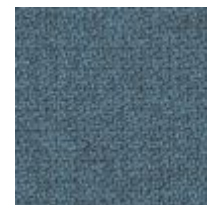
Step Melange
65047



Step Melange
64013



Step Melange
68118



Step Melange
67072



Step Melange
66151



Step Melange
65018



Step Melange
60004



Step Melange
61149



Step Melange
60092

STEP MELANGE Dane techniczne: 100% Trevira CS Gramatura: 336 g/m² Martindale: 100 000 cycles

WZORNIK TKANIN - FAMEG

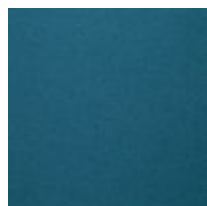
Tkanina Gr. C **WEŁNA**



Wool
91390110



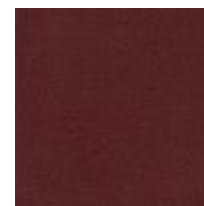
Wool
2288



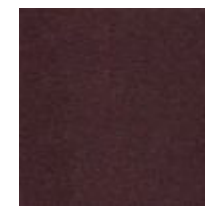
Wool
2279



Wool
2277



Wool
95



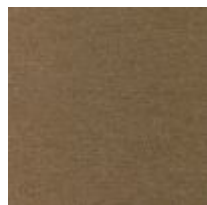
Wool
2014



Wool
1037



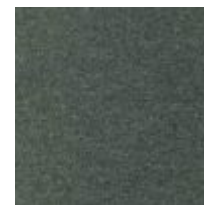
Wool
2151



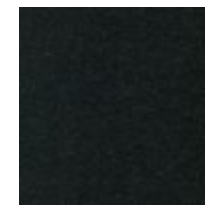
Wool
1026



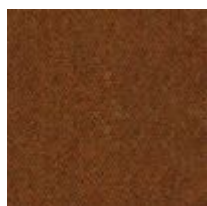
Wool
1000



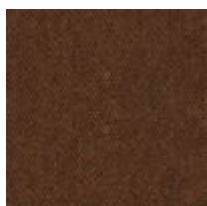
Wool
1001



Wool
1003



Wool
1040



Wool
2153

WOOL Dane techniczne: 70% WO, 30% PA Gramatura: 600 g/m² Martindale: 40 000 cycles

WZORNIK TKANIN - FAMEG

Tkanina Gr. D **WEŁNA**



Mood
3104



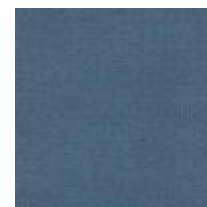
Mood
4106



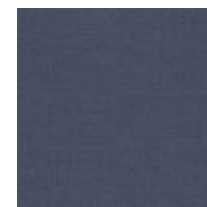
Mood
5105



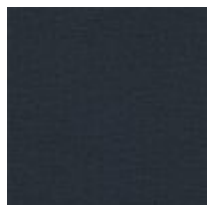
Mood
3103



Mood
4102



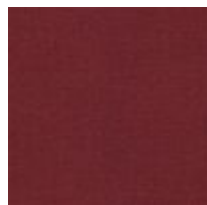
Mood
5104



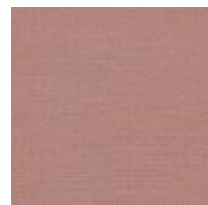
Mood
2103



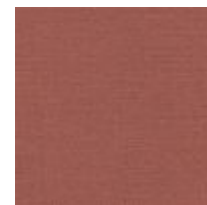
Mood
5101



Mood
5102



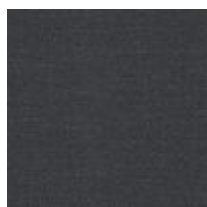
Mood
1106



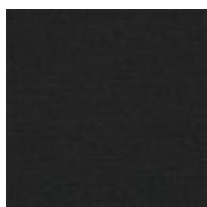
Mood
3105



Mood
3101



Mood
2101



Mood
2104

MOOD Dane techniczne: 92% Wools of New Zealand, 8% PA Gramatura: 396 g/m² Martindale: 95 000 cycles